



Software
Communication
Data Management

Software to help you manage your G100, G110, G150, G200 and G210 analysers

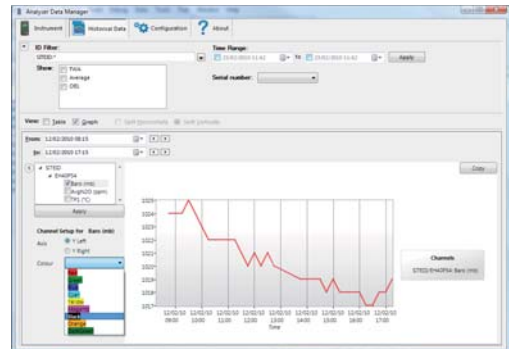
Analyser Data Manager enables you to manage your G100, G110, G150, G200 and G210 gas analysers. You can download readings, the instrument event log; graphically trace real-time and historical readings on your PC.

Features

- Download readings to your PC
- Fast USB transfer
- Real-time graphical data tracing
- Remote operation (for laboratory environments)
- Database storage
- Viewing of historical data in tabular and graphical form.
- Simple export data to spreadsheets, word processors and email

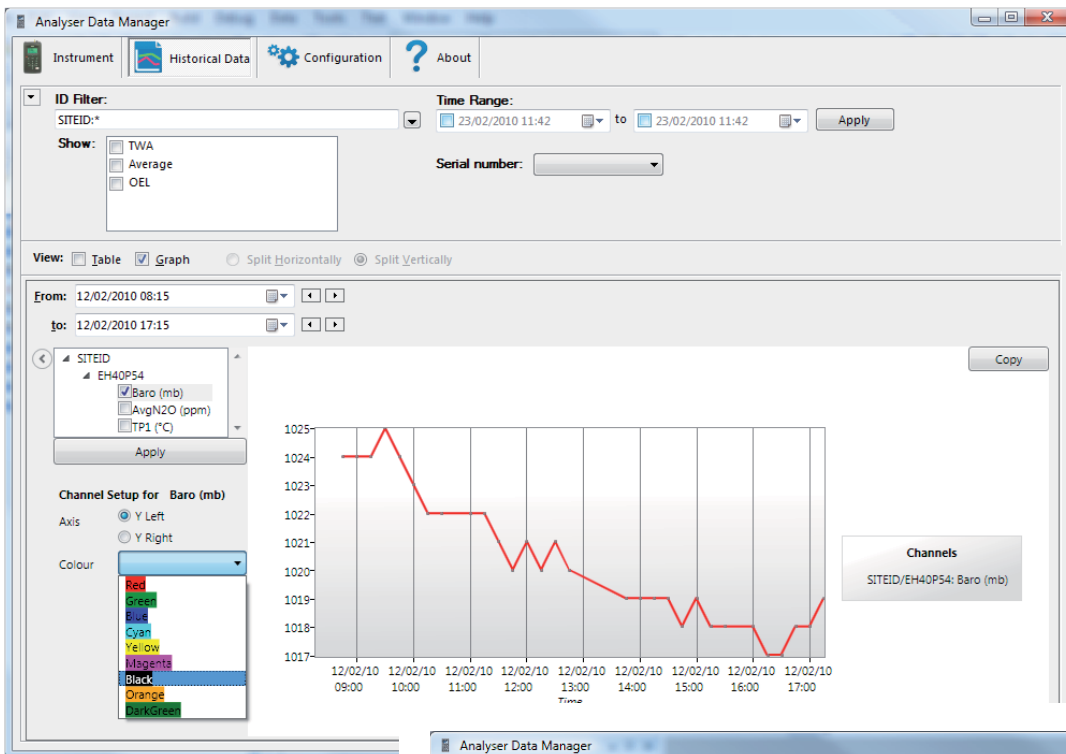
Benefits

- Removes the need for pen and paper
- Easy downloading and reporting
- Identifies different analysers
- User friendly
- Familiar windows interface
- Filter data by code or date range
- Review instrument status



Compatibility

- Compatible with Microsoft Windows XP with Service Pack 3 or later (32-bit)
- Microsoft Windows Vista with Service Pack 2 or later (32-bit and 64-bit)
- Microsoft Windows 7 (32-bit and 64-bit)
- **Requirements** Microsoft .NET Framework V3.5 SP1 (included)
- Microsoft SQL Server 2005 Express (included)
- Two available USB ports (USB lead included)
- 250MB disk space
- 1GB RAM
- Network connection (for remote operation only)



This screenshot shows the 'Analyser Data Manager' interface for instrument management. The top bar indicates 'IN00021 - G210' and includes 'Historical Data', 'Configuration', and 'About' tabs. On the right, a blue header displays 'G210 IN00021' along with 'Product Version V2.02 - 100226', 'Next Service Due 23/02/2011', and 'Last Factory Calibration 23/02/2010'. The main area is divided into 'Identifier Management' and 'Event Log'. Under 'Identifier Management', there is a 'Master List' showing a tree structure of identifiers (e.g., 00000001, A10001, B10001, C10001, etc.). Below the list are 'New', 'Delete', and 'Create Block...' buttons. A note states: 'Green entries indicate new entry from instrument.' To the right, the 'Instrument's List' section contains a red warning: 'The instrument's ID list can only be set-up when the instrument is connected.' On the left, a 'Disconnected' grid shows icons for various instruments, with IN00632 highlighted in red.

The above screen shots of the Analyser Data Manager shows the typical output.